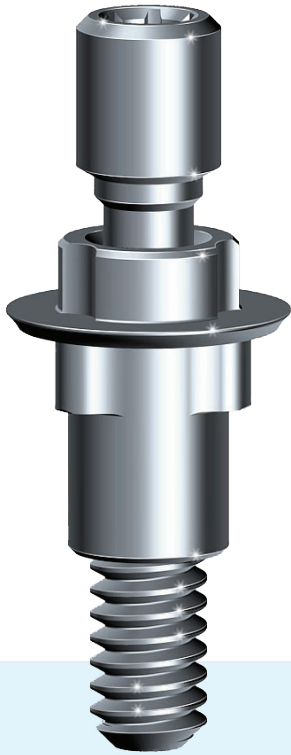


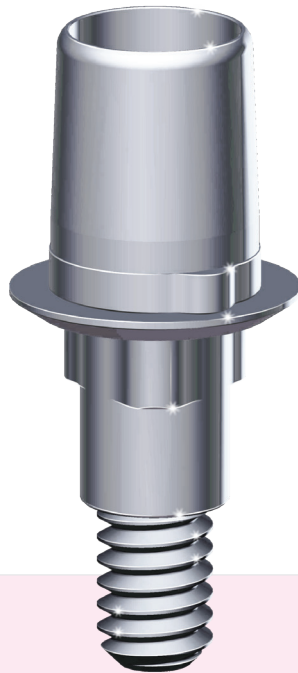


HI-TEC IMPLANTS DIGITAL



Screw Retained T-Base

Engaging	Non-Engaging
ZTA-T	ZTA-T-R
W-ZTA-T	W-ZTA-T-R
NL-ZTA-T	NL-ZTA-T-R
SL-ZTA-T	SL-ZTA-T-R
NV-ZTA-T	NV-ZTA-T-R
RV-ZTA-T	RV-ZTA-T-R
WV-ZTA-T	WV-ZTA-T-R
T-CBA	T-CBA-R
T-CBA-W	T-CBA-R-W



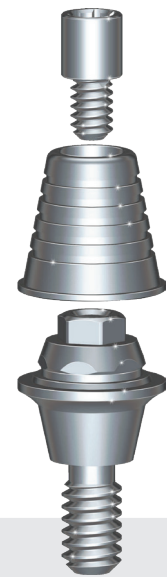
Cemented T-Base

Engaging	Non-Engaging
S-PRN	S-PRN-R
W-PRN	W-PRN-R
NL-PRN	NL-PRN-R
SL-PRN	SL-PRN-R
NV-PRN	NV-PRN-R
RV-PRN	RV-PRN-R
WV-PRN	WV-PRN-R
T-PRN	T-PRN-R
T-PRN-W	T-PRN-R-W





Scan Abutment

Short	Long
S-SCAN-S	S-SCAN-L
W-SCAN-S	W-SCAN-L
NL-SCAN-S	NL-SCAN-L
SL-SCAN-S	SL-SCAN-L
NV-SCAN-S	NV-SCAN-L
RV-SCAN-S	RV-SCAN-L
WV-SCAN-S	WV-SCAN-L
T-SCAN-S	T-SCAN-L
T-SCAN-W-S	T-SCAN-W-L



MULTI UNIT ABUTMENTS

T-Base	Scan Abutment
MU-TB	MU-SCAN
	

Logic Plus & Spark, Self Thread 3.3 & 3.75
Self Thread 4.2 & 5.0
Logic 3.0 & 3.5, Expert 3.5, Implex 3.5
Logic 4.3, 5.0 & 6.0, Expert 4.3 & 5.0, Implex 4.3 & 5.0
Vision 3.5
Vision 4.3
Vision 5.0
Tite Fit
Wide Platform Tite Fit



HI-TEC IMPLANTS LTD

20 Galgalei Plada St. P.O. Box 2022 Herzlia 4672220 Israel
 Tel. +972 9 9587775, Fax. +972 9 9582713
 e-mail: sales@hitec-implants.com Site: www.hitec-implants.com

